

## Is your HT machine supported?

If you own a **barwell HT2000** or **HT3500** preformer, the machine's control panel needs to be upgraded.

This will ensure your production is not at risk of severe levels of downtime, which could be damaging and disruptive to your business.



## Why do I need to upgrade? – The risk of running an HT without support

HT machines - which were introduced in the late 1980's - incorporated PCB control boards and electronic components, which although state of the art for their time, are no longer manufactured or readily available, and cannot be supported.

We are unable to guarantee the supply or suitability of the majority of the components which are likely to need replacing, should you experience a machine fault. As your machine gets older; the risk is increased as many existing components are now way past their standard life expectancy.

By continuing to use an outdated **Pera HT2000** or **Allen Bradley HT3500** control system on your

Barwell, if you suffer a fault, it will cost a lot of money to repair and is likely to mean sourcing second hand parts or expensive alternative components. In these instances, we would not be able to endorse their suitability or even guarantee if they can be sourced. In most cases, even when an option is available, it will be subject to a long lead-time.

However, it is more likely you will be faced with an alternative solution **NOT** being available, meaning your control panel and machine will be unusable.

Barwell is able to secure the continued and long-term operation of your HT and provide many additional safety/production benefits at the same time.

## What options are available to you?

1. Continue to run your machine unsupported and run the risk that your machine will become redundant, or cost a significant amount of money to repair, including a potential prolonged period of downtime
2. Trade in your current machine for a new or rebuilt Barwell preformer and enjoy peace of mind from an up-to-date fully supported machine
3. Have your current HT machine upgraded 'on-site' to incorporate a new and up-to-date control panel, electrical panel and cutter assembly, as well as many other enhanced safety and performance features. A machine upgrade will take 5 days at your factory, including full operator training and can be done for a fraction of the cost of a new machine and will be fully supported.



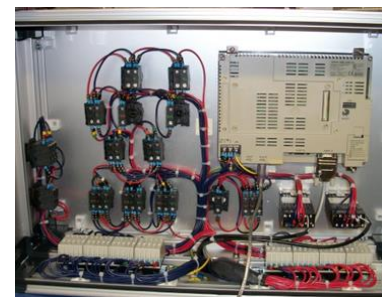
*Includes new and compact electrical cabinet housing.*



*Newly wired cabinet complete with new circuit breakers, contactors, PLC, cutter inverter, safety relay and motor looms.*



*Brand new control interface cabinet with large 8" colour TFT touch-screen interface. Includes push buttons and control label.*



*Newly wired console with touch screen HMI (including 2000 product database storage on flash drive memory) and temperature controllers.*

## What are the full benefits of upgrading?

Barwell machines are built to last, which is why your machine has outlived the technology of their control system, so by upgrading, your machine will be fit for another lifetime.

- Improve on your machine's already highly accurate blank weight production capability
- Reduce material wastage even further
- Be safer and fully compliant with the latest international safety standards
- Improve your production efficiency

- Make your machine less expensive and easier to operate and maintain
- Significantly increase your machine's life expectancy
- And, of course, you will guarantee all components are fully supported and readily available

We can also offer discounted rates for a machine service or a full hydraulic upgrade, if combined at the same time as your control panel upgrade.

***Join the growing number of HT owners who have upgraded their preformers, safe in the knowledge that their machine is now fully supported to ensure operational continuity.***

Our special upgrade packages have been developed to transform your preforming and your expenditure is quickly recouped due to the material, time and labor savings gained.

You will also benefit from peace of mind that your machine is safe for operators and free from causing major downtime in the event of a fault.

We should be able to quickly judge whether your machine is suitable for an upgrade by analyzing photographs of the key areas of your machine, although in some cases a pre-upgrade visit may be required.

**Contact us for a more detailed discussion about your requirement and for a formal quotation.**



- A new variable speed AC motor is fitted.
- Includes the installation of a robust safety cage interlock & brackets to comply with the latest international safety requirements.
- Scales loop feedback system

## Upgrade Overview

Includes the replacement of all current electrical parts, computer control system and cutter assembly.



- Incorporation of the proven Barwell scales feedback system with new large 8" color TFT Omron touch-screen with simple and easy to operate controls
- Includes 2000 product database with easy list and edit functions, pop-up Qwerty keypad, multi-language display, supervisor database, on-screen diagnostics, ram position display and automatic weight adjustment from scales
- A fully wired new electrical control cabinet complete with new circuit breakers, contactors, Omron PLC, Omron cutter inverter, safety relays and motor looms.
- New control interface with control label, HMI, push buttons, temperature controller and blank totalizer
- Installation on the cutter cage of a robust metal Guardmaster® interlock and brackets to comply with the latest safety regulations
- A new variable speed AC cutter motor with options of a new drive shaft and conversion plate for the removal of the electric clutch
- Cutter range of 12-800 CPM
- Full service set of consumables, including main ram seal and internal seals
- Installation and machine testing, operator training refresher course and full machine health check inspection
- Production and supply of new operating instructions and electrical drawings